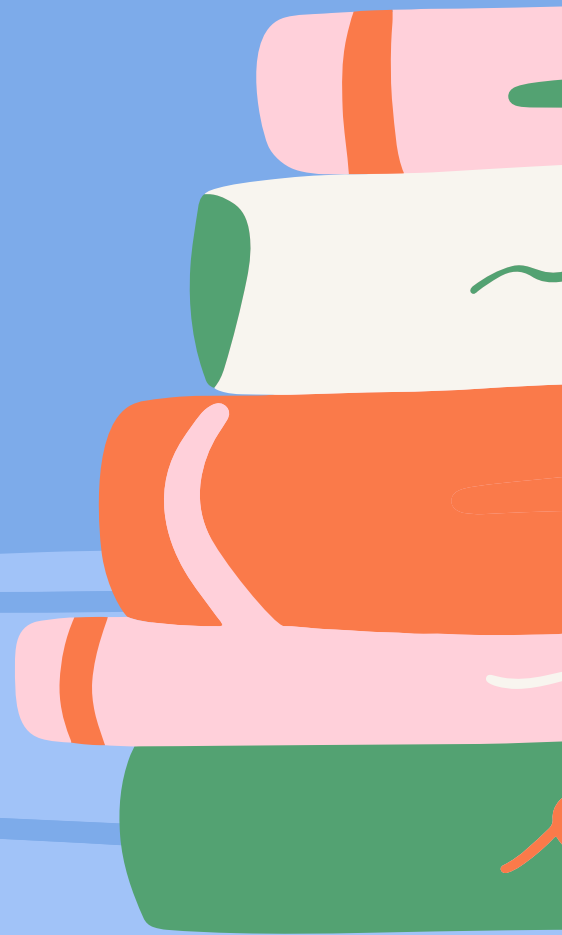


WEDNESDAY WEBSITE

MAY 5TH, 2021

 **Kami**



SO WHAT IS IT?



Interact with any document

Transform all your static documents, PDFs, images, or other learning resources into an interactive experience ready for expression, analysis, or debate.



A seamless workflow

Create, send, and grade assignments all from one place. Kami works seamlessly with Google Classroom, Canvas, and Schoology Learning Management Systems too.



Online or offline, in-class or remote

Whether you're teaching in the class, remotely, or a bit of both, Kami is the tool for you. Kami works online or offline for students without reliable network access.



Student-centric collaborative learning

Universal learning environment, enabling students to interact with teachers, resources, and each other in their preferred medium – text, freehand, audio, voice-typing, or video.

WHO IS IT FOR?



WHO

Grades K-12



WHERE

English
Science
History
Math



WHEN

Virtual Instruction
Small Groups
Independent Assignments
Real Time or At Home



WHY *Kami*?

Learn

Students enjoy annotating text and editing documents using Kami. Students can annotate on ebooks, publisher-supplied PDFs, worksheets and more.

Create

Kami tools boost students' creativity by allowing them to draw freely and annotate with a selection of colors, shapes and text sizes. Students can easily save files with Kami's Google Classroom integration.

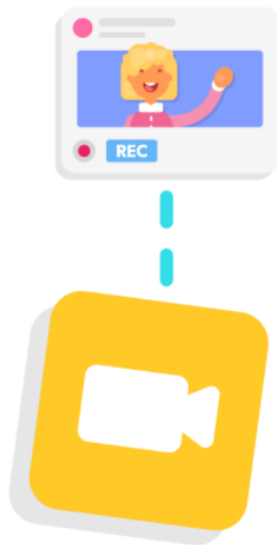
Collaborate

Teachers can markup, discuss and provide feedback using Kami's text, audio, and video annotation tools. These collaborative tools encourage active, real-time participation in the classroom.

FEATURES



Top Kami tools for interactive learning



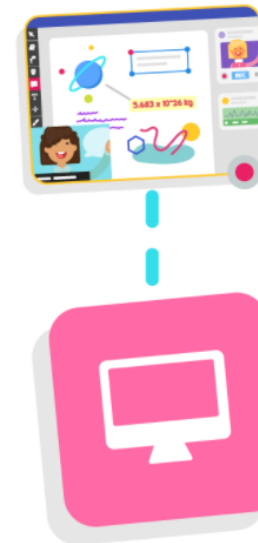
Video comments

Great for asynchronous instructions and recording explanation videos for students.



Voice comments

Express ideas, provide instructions, give feedback or answer questions using audio recording.



Screen capture

An alternative way to demonstrate answers and explanations through screen display recording.



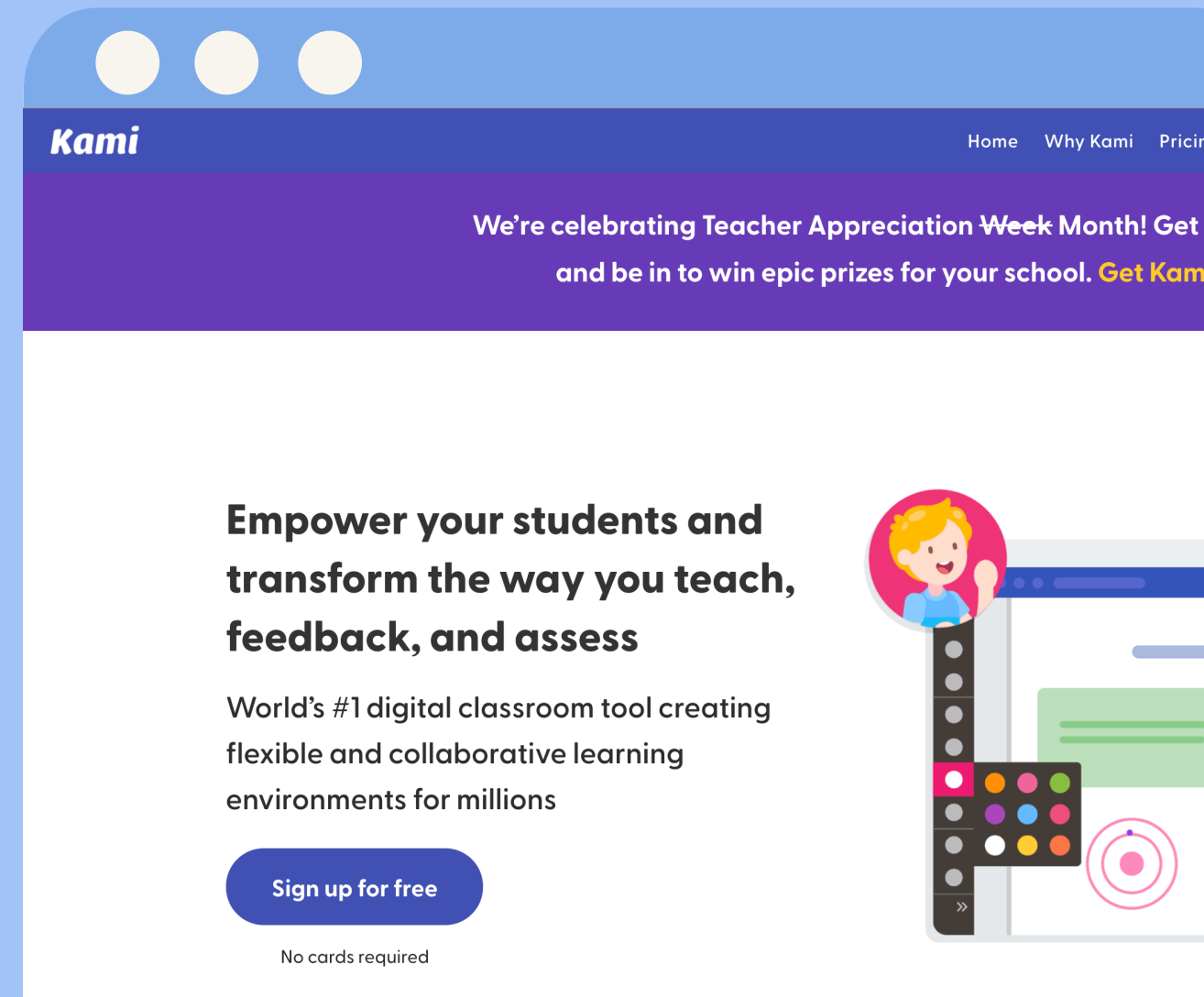
Text to speech

Students with reading comprehension difficulties can use this tool to exercise reading independently.



WHERE CAN I USE IT?

Seamless integrations with what you already use



Check it out!

<https://www.kamiapp.com/>

