

SMART PEOPLE

Book by
Lydia Diamond

Scenic design by
Travis Martinez

Scenic Design Showcase Booklet

Southeastern Theatre Conference (SETC) 2020
Undergraduate Scenic Design
Competition Entry

Awarded Second Place

Travis Martinez
tjm221@lehigh.edu

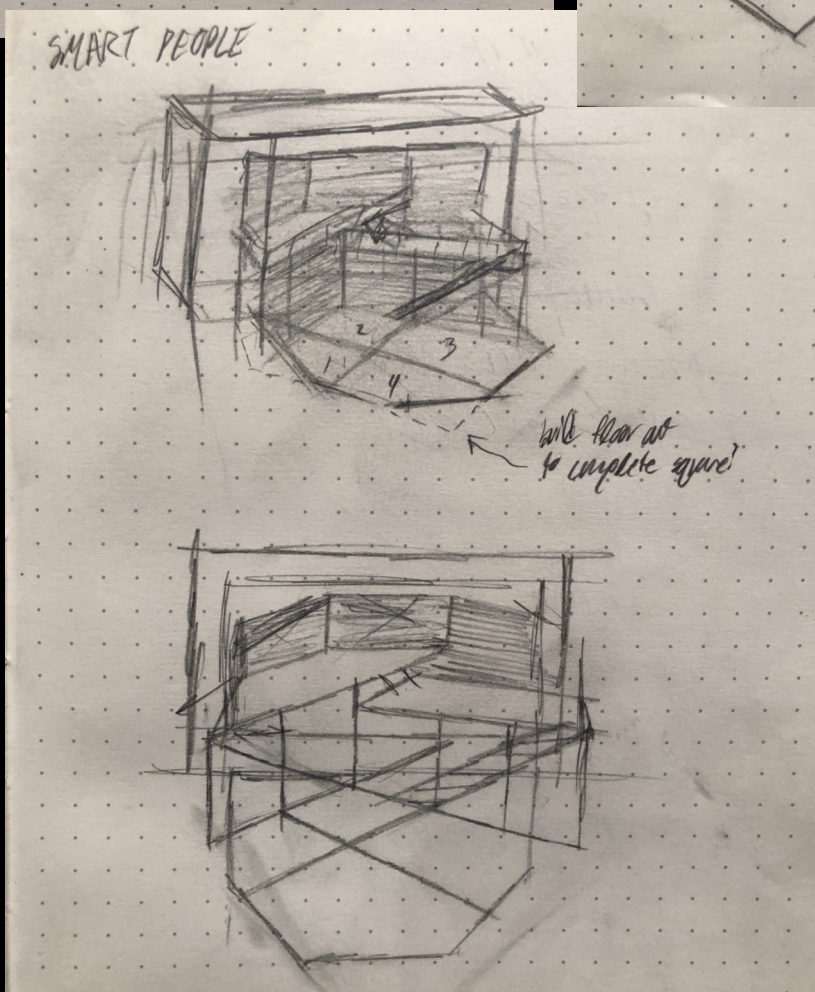
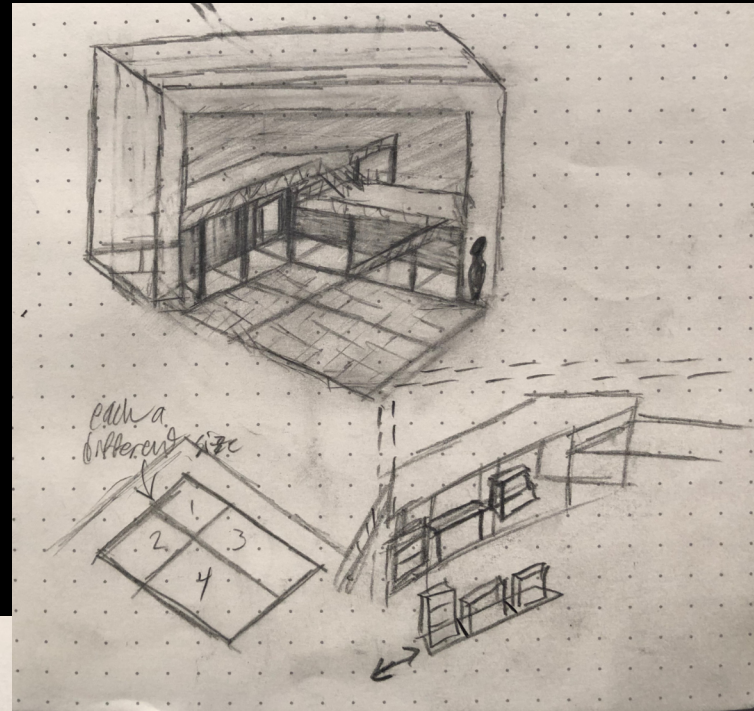
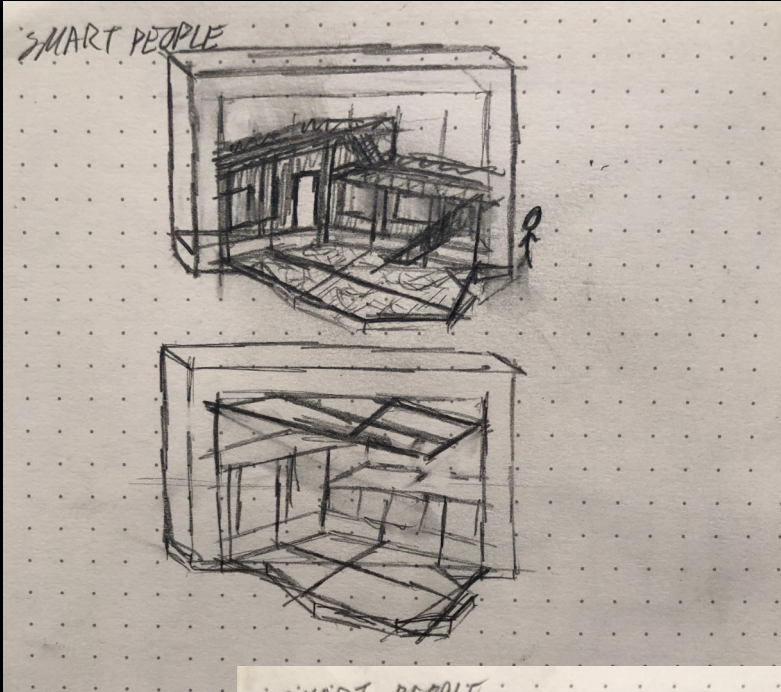
CONCEPT

Four Harvard graduates search for love, purpose, and passion as they struggle to openly communicate their insecurities caused by social perceptions of their race and gender. Ginny, Brian, Valerie, and Jackson, although touted as smart people, struggle to show they are more than what others expect within the changing political and social landscape of Cambridge, MA leading up to Barack Obama's 2008 presidential inauguration.

Set in multiple locations across Cambridge and calling for various props and large furniture pieces, *Smart People* lends itself to the use of a large, abstract, and flexible set. Designed is a vast, multi-level stage allowing multiple locations to be represented in a single instance while also displaying the different social status of those within the play. Characters at the top of their career appear to live on the upper platforms. Those struggling to make ends meet exist lower down. The lack of communication between those on different social levels is physically represented and the characters continue to struggle to communicate until they gain the confidence to break social norms and move on to a different level in their careers and personal lives.

These platforms exist in an interior space of confinement. Wooden floors divided into squares give the sense of crates. Cinder block walls form harsh institutional boundaries. And upper balconies constructed out of the same heavy concrete used below remind us that racism exists within all levels of society. However, all hope is not lost. Posters seemingly placed by the characters adorn the walls. The gray cinder block finds itself hidden under the color of Harvard degrees and mental health awareness banners. The originally harsh world shows signs of slow change by those sick of judgment and social confinement. The hope that people can change for the better provides the spark of color needed to survive in the dark world of *Smart People*.

SKETCHES



RESEARCH



RENDERINGS



CONSTRUCTION



MODEL



PRODUCTION PHOTOS



PRODUCTION PHOTOS



PRODUCTION PHOTOS

